



Plastic Safety  
Systems, Inc.

# RoadQuake™

## Temporary Portable Rumble Strip Installation Procedure

RoadQuake is designed for posted speed limits of 60 mph or less, and temperatures above 40° F.

### Before Installation:

Review the traffic control plan to determine the array position.

Implement proper traffic control procedures to protect workers and the driving public.

Clear the road surface with either a broom or blower to remove pebbles, gravel, sand and other debris.

PSS ships RoadQuake Rumble Strips in a rolled position, using a packaging strap.

To install RoadQuake Rumble Strips, unroll them from the rolled position. If transported unrolled to the site, simply lay the strips on the road.



### Place the 1st Strip in the Array:

Lay the 1st strip in the array perpendicular to the direction of traffic.

Place the beveled edge of RoadQuake in the direction of oncoming traffic.

Make sure that the RoadQuake Logo is facing up.

### Measure and Place the Rest of the Strips:

To complete the array, determine the distance between strips per the traffic control plan, or the manufacturer's recommendation. (See our recommendations on the back page.)

Measure the distance from the trailing edge of the first strip to the leading edge of the 2nd strip.

Lay the subsequent strips parallel to the first strip, at that marked distance.

Repeat as necessary to complete the array.





## Removal Procedure:

To transport and store, we recommend either method:

- Transport and store RoadQuake in a completely flat position. Make sure the ends do not curl.
- Return RoadQuake to a rolled position. To roll the strip back up, turn the strip over, so that the beveled edge and logo face down. Then, roll the strip tightly enough to place the packaging strap around the roll.

Failure to turn the strip upside down, before rolling, may cause the ends to curl upward if stored that way for any length of time.

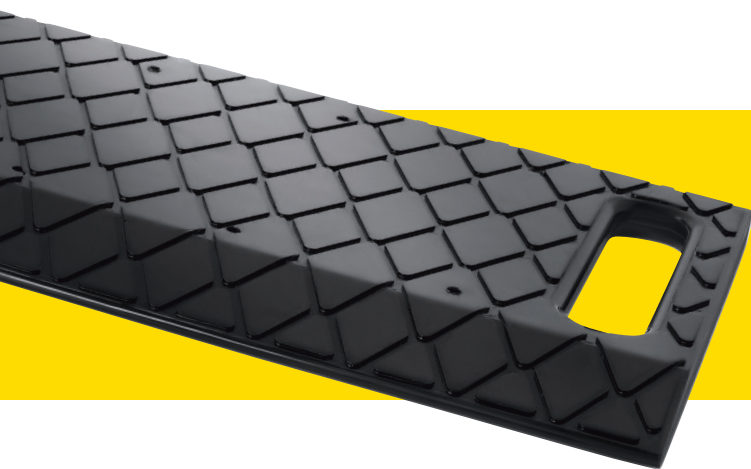
## Manufacturer's Recommendations For Array Configuration:

### Number of Strips per Array:

We recommend 3 or more strips per individual array set, regardless of posted speed limits.

### Space between Strips:

- 35 MPH or less: 3' between strips.
- 36-60 MPH: 4' between strips.



## Cleaning Procedure:

RoadQuake is made with engineered polymer material.

For routine cleaning, use household dishwashing liquid and water. For hard stains, use diesel fuel or kerosene.



2444 Baldwin Road • Cleveland, OH • 44104 • 800-662-6338 • [www.plasticsafety.com](http://www.plasticsafety.com)

"On the Roadway for Safety"®