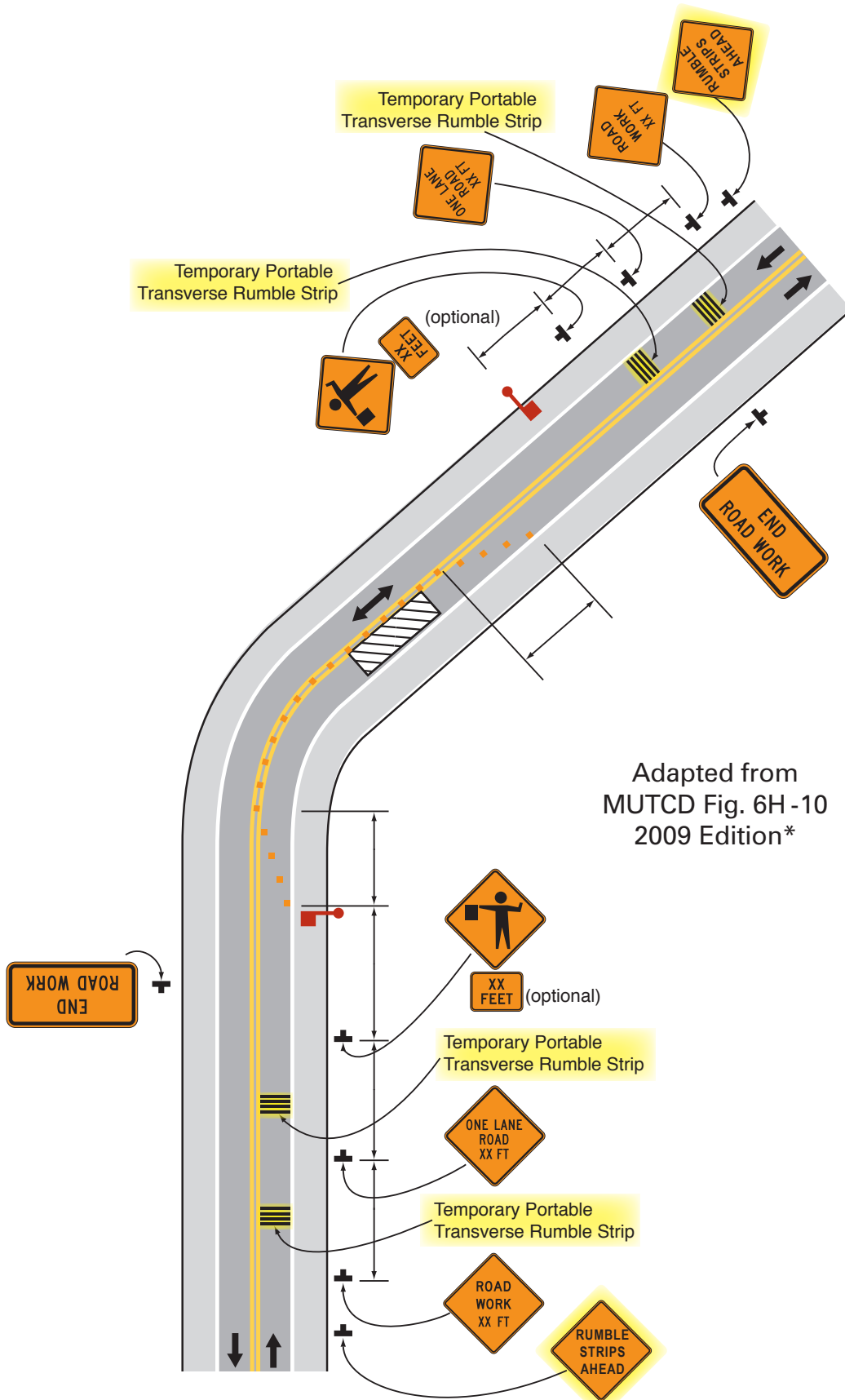


PSS Recommended Lane Closure: Two Lane Road with Flaggers and Temporary Portable Rumble Strips



* PSS modified MUTCD Figure 6H-10 to demonstrate typical array installation patterns for temporary rumble strips and "Rumble Strips Ahead" signs. The arrays and signs do not appear in the original MUTCD drawing; the "Rumble Strip Ahead" sign does not appear in the MUTCD manual.

Roadquake™

Temporary Portable Rumble Strip



Plastic Safety Systems, Inc.

2444 Baldwin Road
Cleveland, OH 44104

p: 216-231-8590

p: 800-662-6338

f: 216-231-2702

www.plasticsafety.com